

porodo | CHOOSE THE BEST
Dual Band WiFi6 USB Adapter
 Additional USB A to Type-C Adaptor | External Antenna
 SKU:PD-W06ACE



Product Description

Porodo Dual Band WiFi6 USB Adapter with Additional USB A to Type-C Adaptor and External Antenna is an 802.11Ax device incorporating the Realtek 8832BU Chipset, enabling it to achieve a transfer rate of up to 1800Mbps. This versatile device can be used with computers, PSPs, media players, and other devices that require wireless capability. It can function as an Access Point (AP) during setup, allowing you to share your network with other Wi-Fi devices. The WPS button simplifies the encryption process, while the AUTO-RUN CD ensures that even users new to the technology can install the adapter quickly and effortlessly.

Specification

Wireless Standards	IEEE 802.11a/g/b/n/ac/ax
Host Interface	High-speed USB 3.0 interface
Frequency Range	2.4GHz; 5.8GHz
Modulation Type	DBPSK, DQPSK, CCK, OFDM
Receiver Sensitivity	At 270M: -68dBm@10% PER At 54M: -68dBm@10% PER At 11M: -85dBm@10% PER
Work Mode	Ad-Hoc Infrastructure, soft AP
Wireless Security	WPS, 64/128bit WEP, WPA/WPA2, WPA-PSK/WPA2-PSK(TKIP/AES)
Supported Operating Systems	Windows XP/VISTA/Win7/Win10/Win11/Linux/Macintosh
Interface	USB 3.0 Hi-Speed connector
Antenna Type	2dBi High Gain Antenna
Environment	Operating Temperature: 0°C to 40°C Storage Temperature: -40°C to 70°C Operating Humidity: 10% - 90% (Non-Condensing) Storage Humidity: 5% - 95% (Non-Condensing)
Compliance	FCC (USA), CE Mark (Europe), RoHS Compliant, Wi-Fi Compliant

Driver Installation Guide

1. QR Code:



2. Download URL:

<https://www.szedup.com/support/driver-download/usb-adpeter/ep-ax1696/>

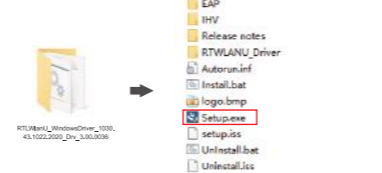
1. Download the Driver:

-To obtain the driver, scan the QR code or input the URL into your browser.
 -Select the appropriate driver for your operating system:



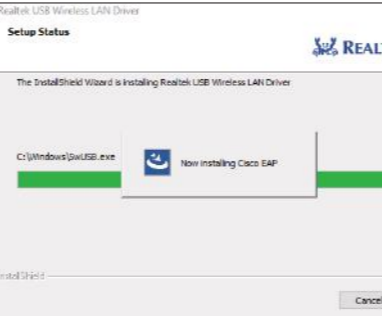
2. Extract and Install the Driver:

The downloaded file is in compressed format; extract the contents. From the extracted files, locate and execute 'Setup.exe' to begin installation as shown.



3. Installation Progress:

-The installation should take approximately 1 minute.
 *A progress bar will indicate the installation status of the Realtek USB Wireless LAN Driver.

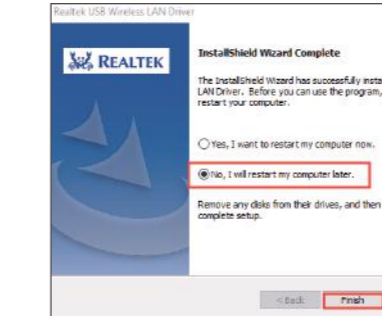


4. Completing Installation:

Upon completion, select "No, I will restart my computer later" and click 'Finish' to exit the installer.

5. Establishing a Connection:

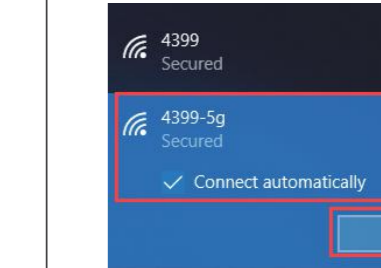
Once the installation is complete, you should be able to connect to the Internet.



6. To connect:

-Click the Internet icon at the bottom right of your screen.
 -Choose your preferred Wi-Fi network from the list.
 -Enter the Wi-Fi password and select 'Connect'.

*Ensure 'Connect automatically' is checked for future convenience.



6. To connect:

-Click the Internet icon at the bottom right of your screen.
 -Choose your preferred Wi-Fi network from the list.
 -Enter the Wi-Fi password and select 'Connect'.

*Ensure 'Connect automatically' is checked for future convenience.



-Upon successful connection, the status will change to "Connected, secured".