

porodo



PD-FA4GR-WH

High-Speed 4G Router

300 Mbps WiFi & 4G LTE

Preparations

1. Insert the 4G network card into the SIM slot of the device(The SIM card gap to left, chip down). The normal insertion will have a feedback sound. Note that the SIM card is a standard SIM size.(As shown in Figure 1)



Figure 1

2. Turn on the DC power and plug it into the DC interface of the device, the Power and 2.4G LEDs will be blue. If the device 4G network recognition is normal, the 4G indicator will be blue. The Wi-Fi signal name is "CPE-XXXX" (XXXX is the last four digits of the MAC address), The Wi-Fi password is 9876543210.

Note: If the SIM card is inserted or replaced while the device is working, the SIM card will not be recognized. Please insert the SIM card and then turn on the device.

Mobile phone settings

Using video links:



1. The mobile phone searches for the Wi-Fi signal and connects to the signal of the name "CPE-XXXX"(without quotes and XXXX is the last four digits of the MAC address of the device). The Wi-Fi password is 9876543210.

2. Open the mobile browser and enter "172.16.0.1" (without quotes). The default account/password is "admin" (without quotes)(as shown in Figure 2 and Figure 3).



Figure 2

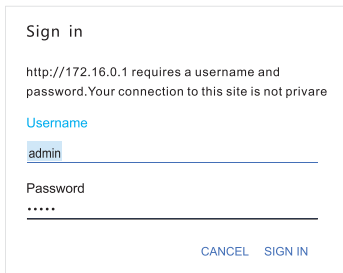


Figure 3

Note: Some mobile phones will have the following WLAN assistant prompts (as shown in Figure 4), click "CONNECT", otherwise the settings will not be completed.

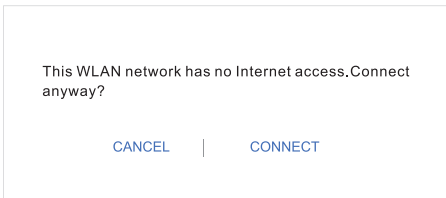


Figure 4

3. The first time you log in to the configuration page, you will enter the device home page (as shown in Figure 5), drag the page to the bottom (as shown in Figure 6), click [User Wizard], and follow the user guide page operating (shown in Figure 7).

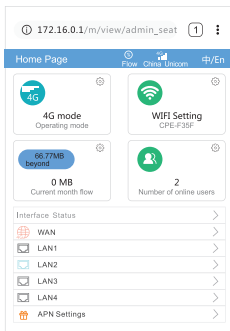


Figure 5

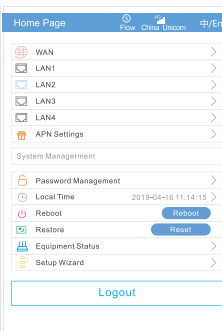


Figure 6

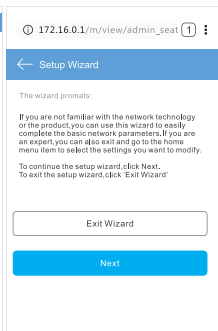


Figure 7

4. Click [Next] on the setup wizard page to enter the system mode configuration page (as shown in Figure 8), select "4G mode" click [Next] to enter the wireless configuration page (as shown in Figure 9), please change the "Wi-Fi name" according to your actual situation, "Encryption method" select [WPA2-PSK], "Wi-Fi password". After the setting is completed, click the [Finish] button, the device will restart, and the mobile phone searches for the newly changed Wi-Fi name signal, enters the password to access the Wi-Fi.

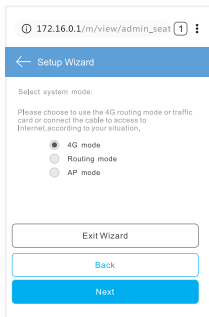


Figure 8

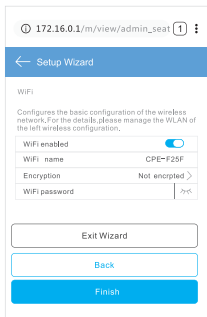


Figure 9

Mode description :

(1) 4G mode: The device accesses the Internet through 4G mode, and shares the network to wired and Wi-Fi users through NAT conversion technology. The device WAN physical interface is converted into LAN interface mode.

(2) Routing mode: The device accesses the Internet through wired mode, and shares the network to wired and Wi-Fi users through NAT conversion technology. The device 4G function will be stopped. There are three ways to access the network through wire: automatic acquisition, PPPoE dialing, Static IP (as shown in Figure 10), please consult your broadband provider for Internet access information.

1) Automatic acquisition: Obtain IP address information from the superior device, you can access the Internet without setting up the Internet access information. Usually, the computer wired access can be accessed without setting.

2) PPPoE dialing: The device needs to dial the fixed account and password to access the Internet. The account and password can be consulted by the broadband service provider to obtain relevant information (as shown in Figure 11).

3) Static IP: The device needs to manually fill in the IP address, subnet mask, gateway and DNS information to access the Internet. For this information, please consult the gateway administrator or broadband service provider for relevant information (as shown in Figure 12).

172.16.0.1/m/view/admin_seat 1

← Setup Wizard

Choose the way to get online

Three different ways to get online, please choose according to your own situation.
Note: the Setup Wizard will reset your network settings and become the default "single LAN single WAN" mode when you set up the network.

Automatic acquisition
 PPPoE dialing
 Static IP

Exit Wizard

Back

Next

Figure 10

172.16.0.1/m/view/admin_seat 1

← Setup Wizard

PPPoE dialing

When you apply for broadband service and have a fixed IP address, the network service provider provides you with some basic network parameters, please fill in the box. If you forget or are not clear, please consult your Internet service provider.

Account

Password

Exit Wizard

Back

Next

Figure 11

172.16.0.1/m/view/admin_seat 1

← Setup Wizard

Routing mode static IP acquisition

When you apply for broadband service and have a fixed IP address, the network service provider provides you with some basic network parameters, please fill in the box. If you forget or are not clear, please consult your Internet service provider.

IP address

Subnet mask

Gateway

DNS1

DNS2

Exit Wizard

Back

Next

Figure 12

4) AP mode: When the device is wired to the Internet, NAT function will be stopped, the device's WAN physical interface will be converted into LAN interface mode, and the network will be shared to the wired and Wi-Fi users. Network services and information will be provided by the upper device, and the device will only provide the service of converting the wired to Wi-Fi.

5.If the device needs to be set to "Routing Mode" or "AP Mode", please refer to the above instructions and follow the instructions of the operation guide. After the setup is complete, the device will restart, and the mobile phone searches for a new Wi-Fi name signal, enters the password to access the Wi-Fi.

Frequently Asked Questions

(1) After the 4G card is plugged in, the 4G light of the 4G routing is not lit, which causes the Internet to be unavailable.

A: In one case, the 4G card is not inserted properly. You should cut off the power of the 4G routing and re-insert the card. In another case, the 4G card is not activated, and the card insert shall be used after activation according to the card manual.

(2) 4G router works normally, the 4G light is on, and the mobile phone is connected to 4G routing Wi-Fi but cannot access the Internet.

A: 1) Enter the routing setting page (the default is 172.16.0.1, the username and password are both admin), check the status---whether the WAN port obtains the IP address. If it is not obtained, it is recommended to reset the 4G route reset.

2) Identify the Internet through the APN setting, insert the 4G card into the mobile phone, view the APN information on the mobile phone, and enter the 4G routing setting page---network setting---APN setting to fill the APN information of the mobile phone to 4G Routed APN settings.

(3) 4G router WAN port address is normal, 4G lights are normal, mobile phones cannot connect to Wi-Fi.

A:Each 4G card has a data plan. In this case, please check your data plan and recharge in time.

Indicator interface description

Port/Button	Function description
DC	Device power supply interface,connect the product's own adapter 12V/1A DC connector
WAN	WAN interface, Network port for accessing the Internet
LAN	LAN interface, Network port for connecting to a switch or computer
SIM	Standard size sim card interface for inserting a data card
RESET	Restore the factory settings button, press and hold the device for 3 seconds, the device will return to the default factory settings
WPS	Press and hold for 1-2 seconds to enter the WPS secure encryption adaptation process

Indicator light	Function description
POWER	Power indicator light,the blue indicator light is always on when the power is turned on
WAN	When the WAN is connected to a effective network cable,the blue LED is always on. When the data is transmitted,the WAN indicator flashing blue light
LAN1	When the LAN is connected to a effective network cable,the blue LED is always on. When the data is transmitted,the LAN indicator flashing blue light
LAN2	When the LAN is connected to a effective network cable,the blue LED is always on. When the data is transmitted,the LAN indicator flashing blue light
LAN3	When the LAN is connected to a effective network cable,the blue LED is always on. When the data is transmitted,the LAN indicator flashing blue light
WPS	WPS indicator (always on when the function is on,flashing when the device is connected)
2.4G	2.4G wireless indicator light (always on when 2.4G wirelessly turns on,flashes during data transmission)
4G	4G network turn-on indicator(always on when 4G function turns on,flashes during data transmission)

porodo

www.porodo.net

 /porodo

 /porodo.gcc